



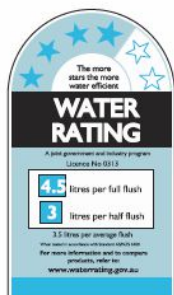
**TURNER
HASTINGS**
EUROPEAN BATHWARE
Creating elegance

R&T®

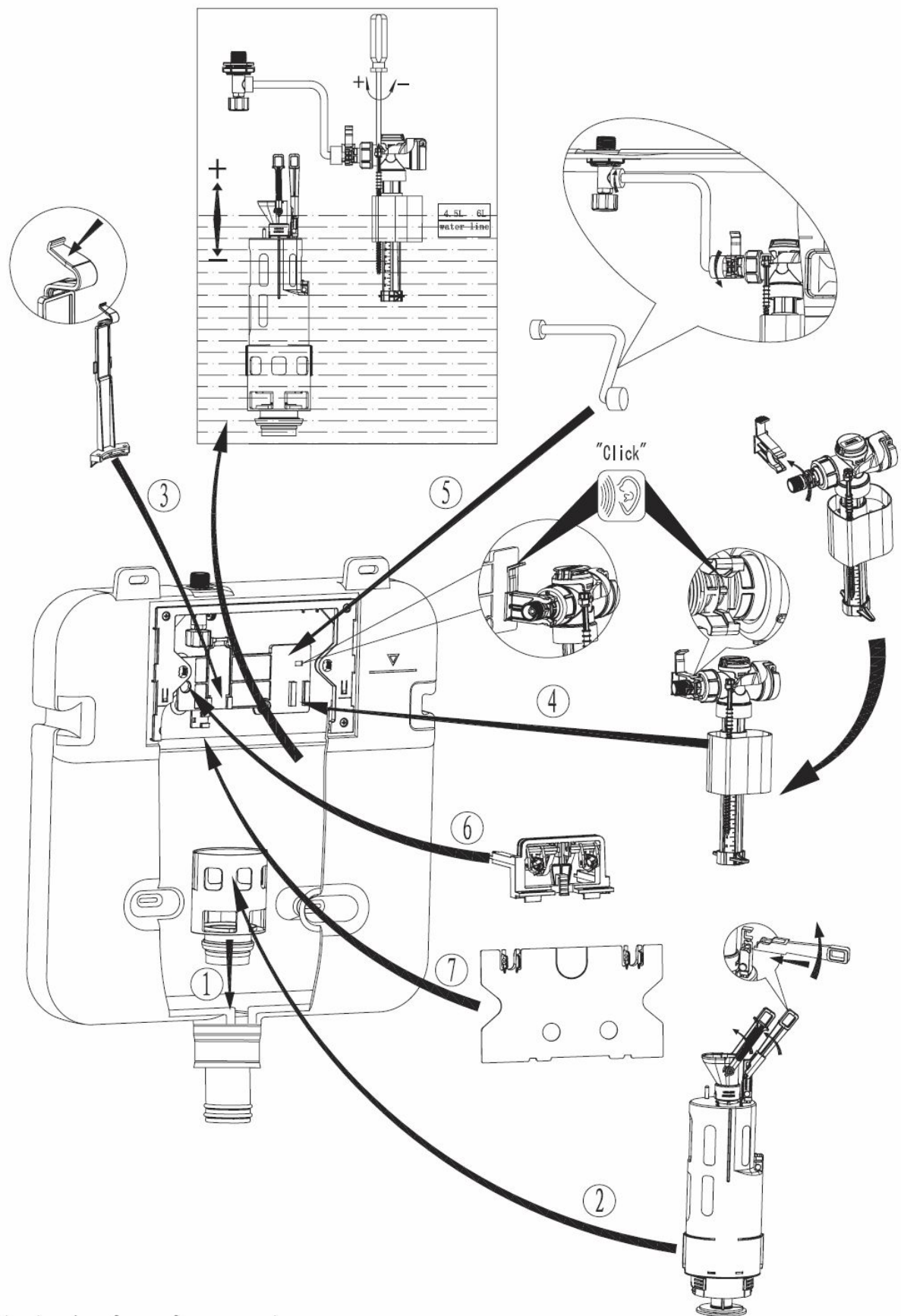
INSTALLATION INSTRUCTIONS

RUSHMORE IN-WALL CISTERN TO SUIT FLOOR PANS

CODE: AU301D



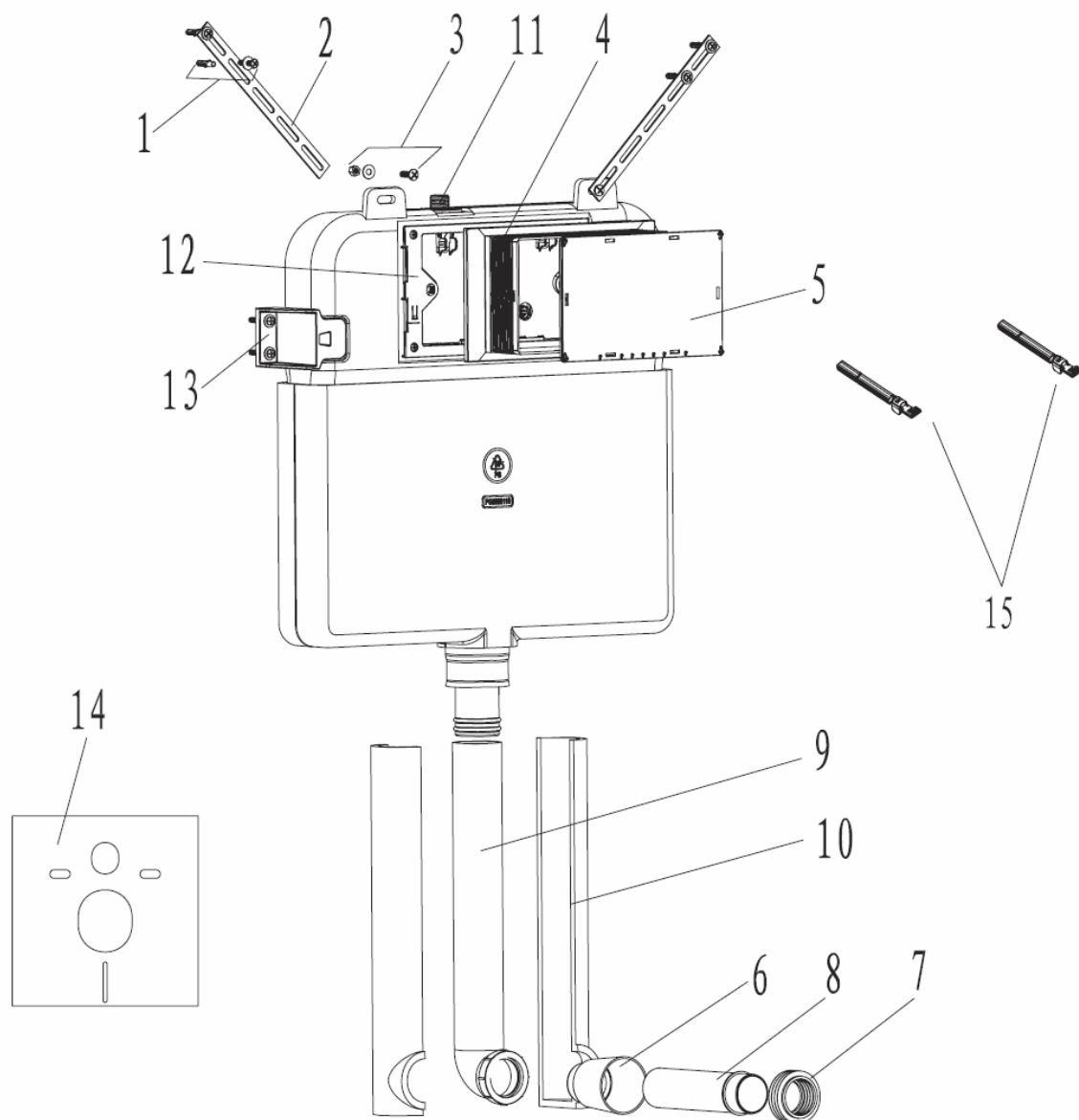
Cistern Internals-Assembly Drawing:



Assembly drawing for reference only

IMPORTANT: READ THESE INSTRUCTIONS BEFORE INSTALLATION.

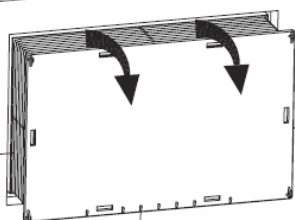
- 1- Check contents of the carton are as listed in this manual.
- 2- Follow the instructions illustrated in the diagrams for methods of cistern installation.
- 3- The flush pipes fit together using O-ring seals. These are pre lubricated but extra may be used if necessary..
- 4- Before connecting the water supply to cistern be sure to flush the pipeline clear of debris. This will prevent damage to the inlet valve and the operation of the cistern.
- 5- The step by step diagrams show the installation to a masonry wall but the cistern can also be installed to timber or steel frame walls.
- 6- To install the dual flush buttons refer to the instructions provided inside the button packaging.
- 7- Ensure that the internal mini cistern tap with black handle is in the fully open position. Water pressure to the cistern must comply with local Water Authority guidelines. If not known it is recommended that a pressure regulating valve is installed near to the water meter to comply the manufacturers warranty conditions.
- 8- For optimal flushing of the cistern the button flush rods must be installed to the correct position. See the button installation diagram.



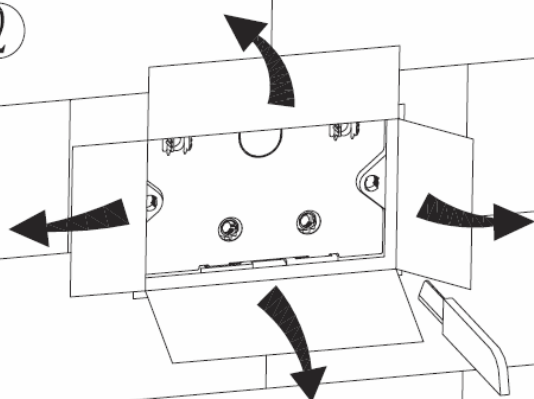
NO.	DESCRIPTION	QUANTITY
1	Wall Plugs	8
2	Metal Fixing Straps	2
3	Fixing Screws	4
4	Dust Box	1
5	Dust Box Cover	1
6	Stopper Plug (Dust Protection)	1
7	Kee-Seal	1
8	Flush Pipe to Pan Conector	1
9	Flush Pipe with 90 Degree Bend	1
10	Polystyrene Noise Reducing Cover	2
11	Water Supply Connection-Mini Cistern tap	1
12	Face Plate(Assembled)	1
13	Cistern Side Fixing Brackets	2
14	VC Mounting Pad	1
15	Locking Pins	2

Installation

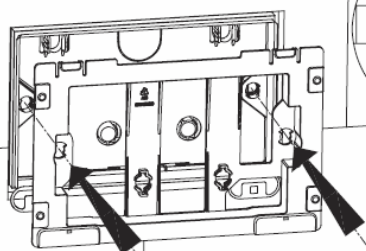
①



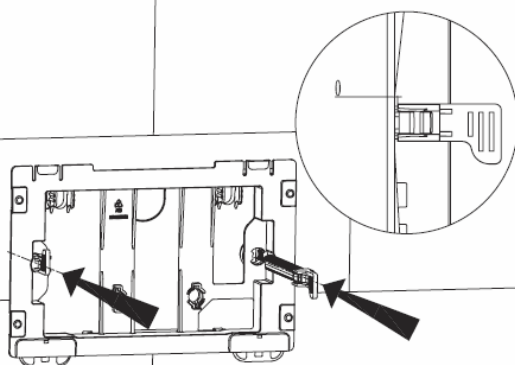
②



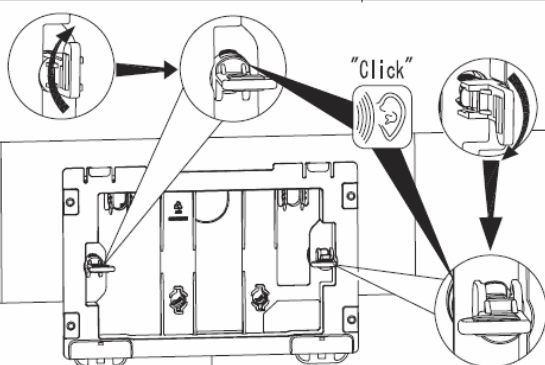
③



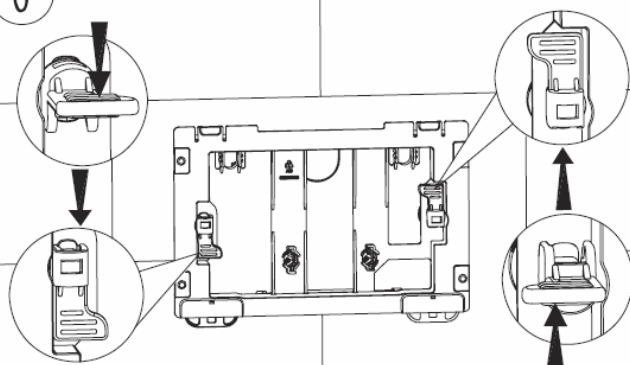
④



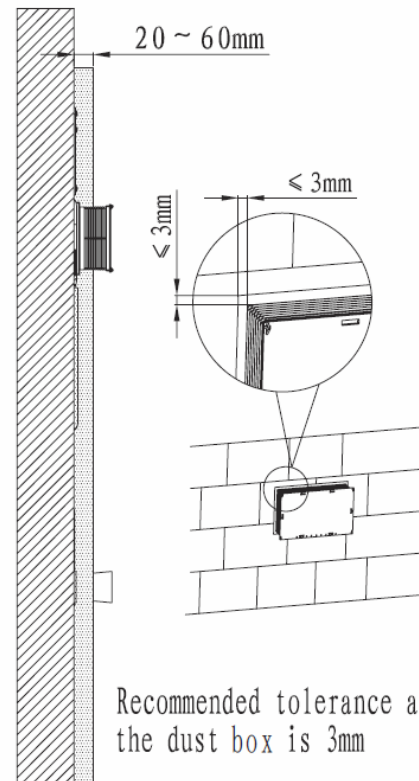
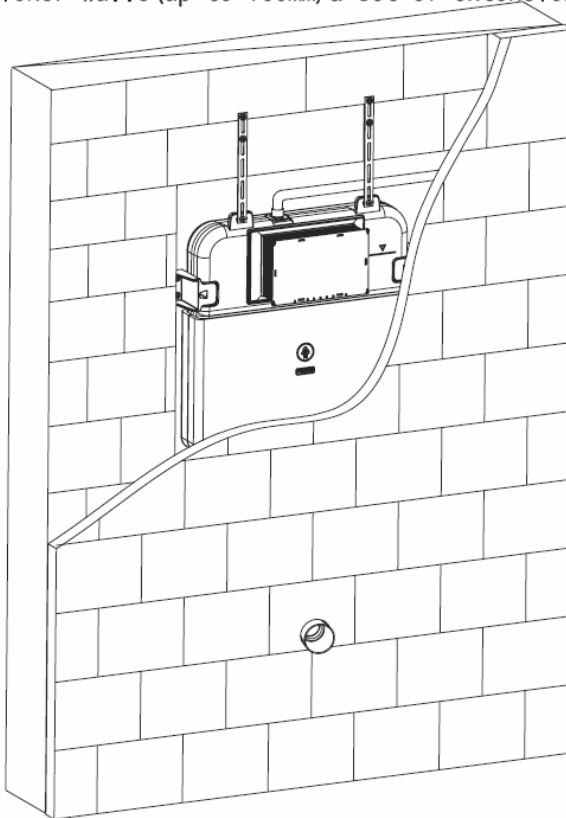
⑤



⑥

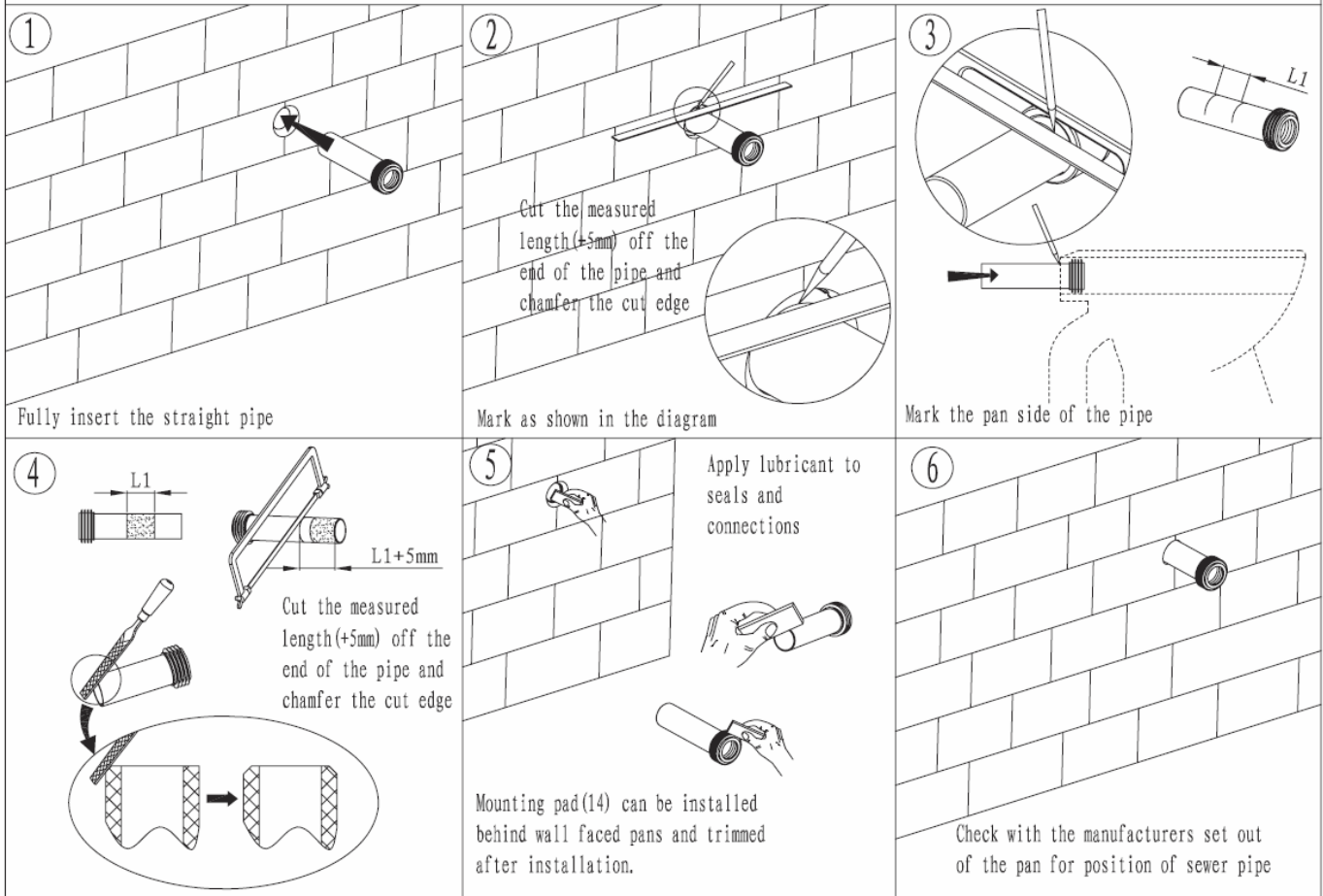


Wall thickness can be from 20-60mm (from front of cistern to finished wall surface)
for thicker walls (up to 160mm) a set of extension rods (XR920) is required. (not supplied)

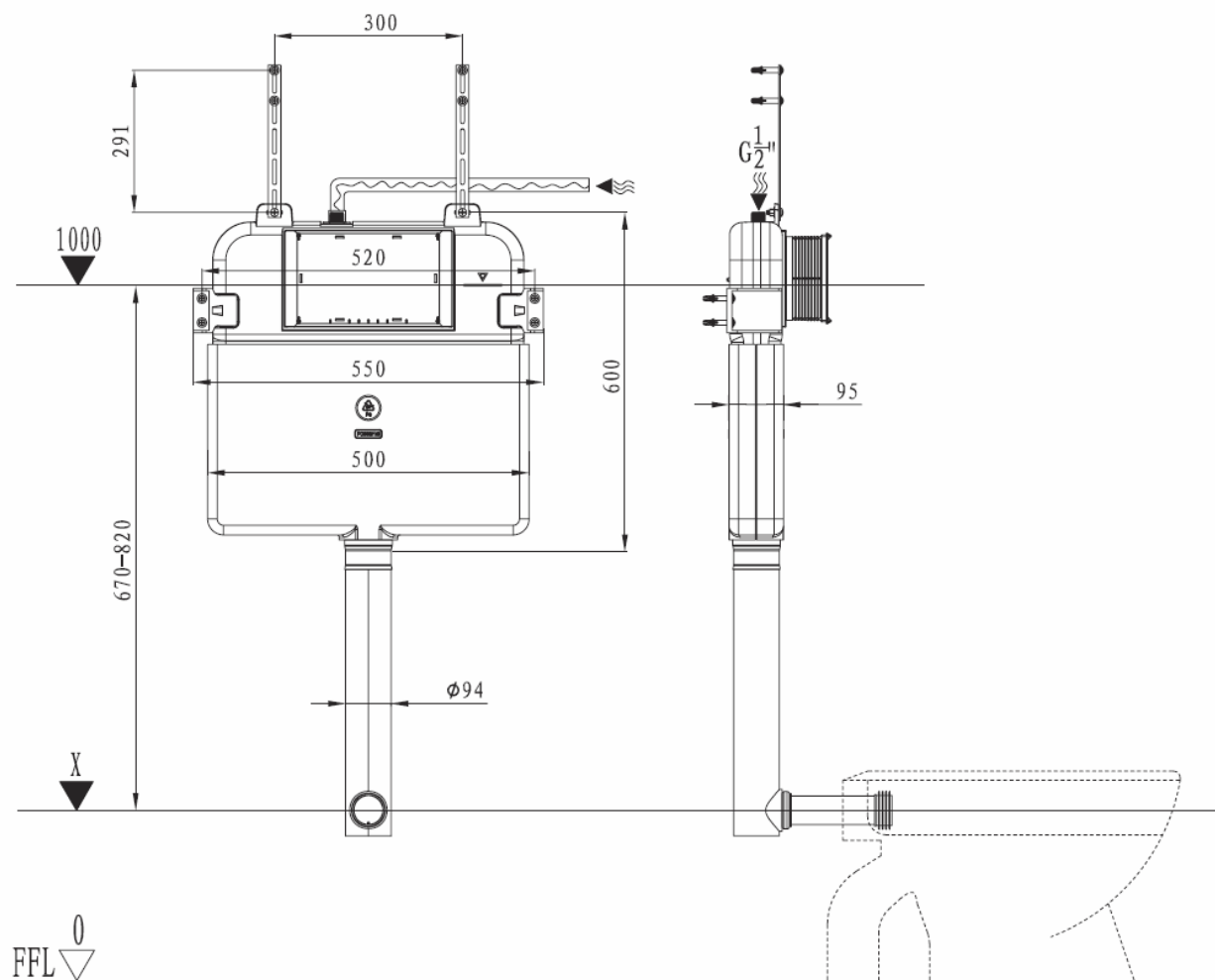


Recommended tolerance around the dust box is 3mm

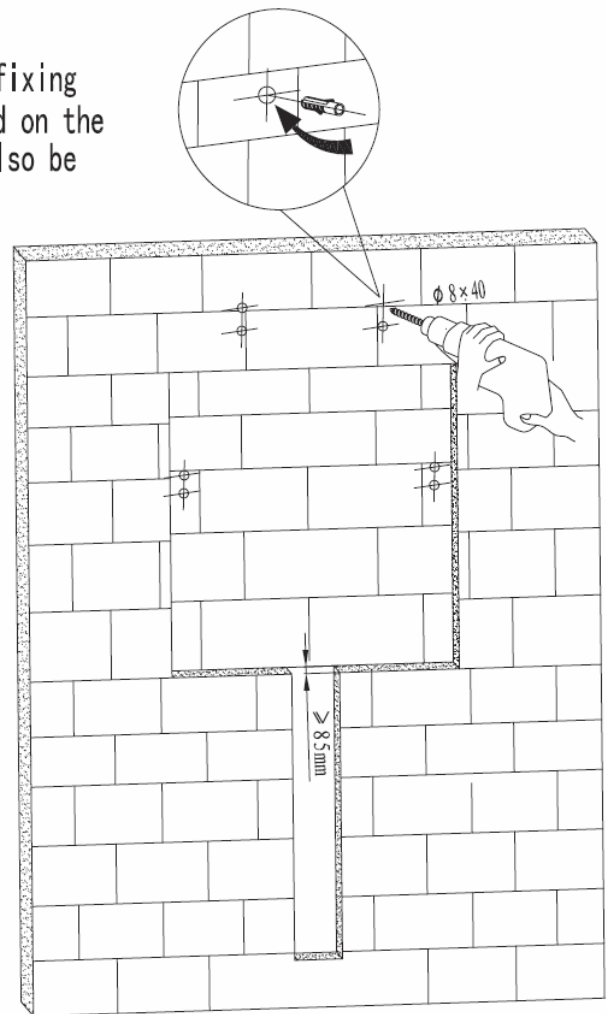
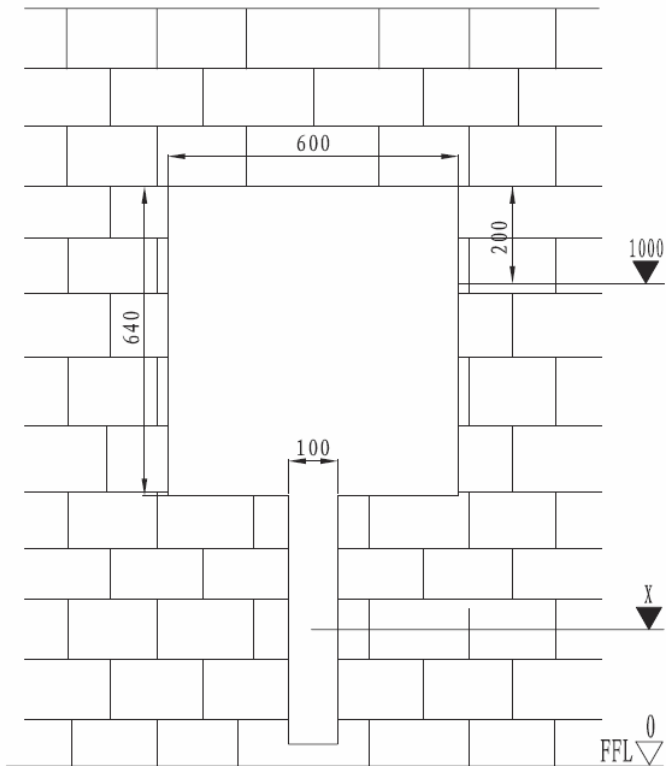
Install vertical flush pipe:



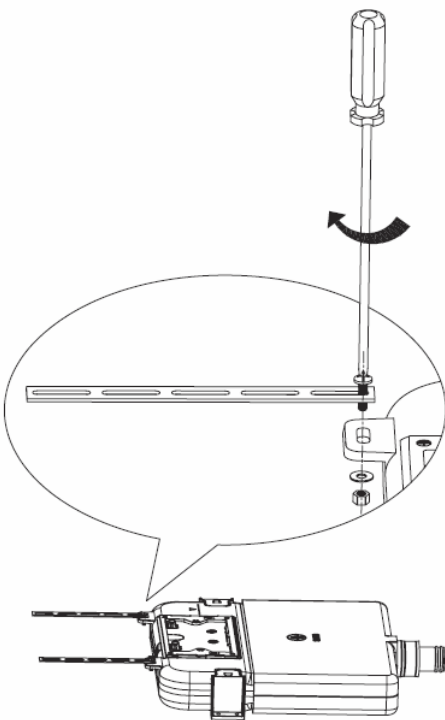
- 1、 The cistern has a top entry water connection and requires a 15mm BSP union connector.
(not supplied)



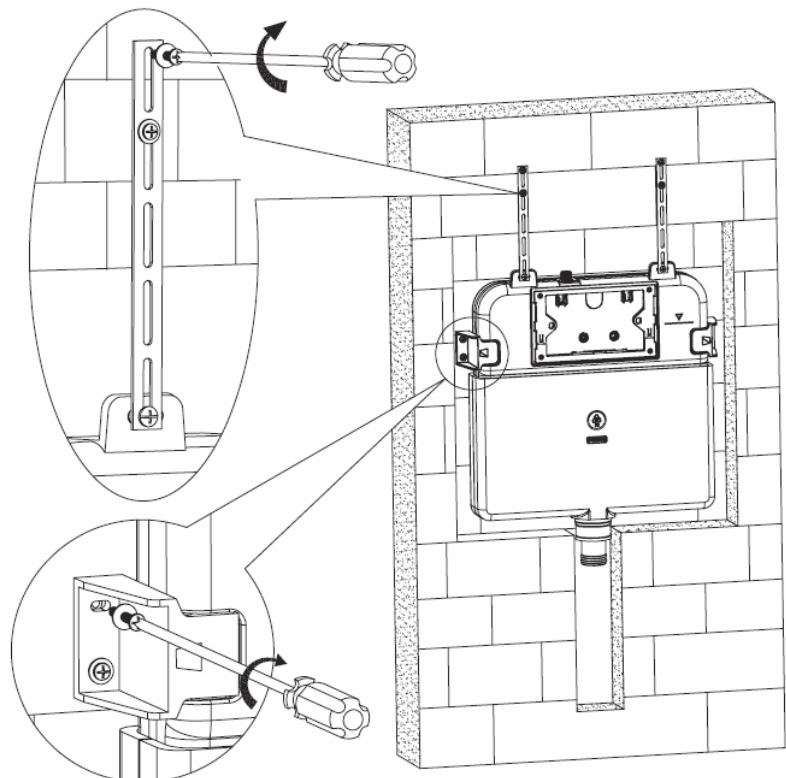
2. Attach the cistern to the wall or frame using the fixing straps with plugs and screws and/or side fixing brackets(13). The side fixing brackets are pre-fitted on the cistern and are to be screwed from front. They can also be reversed to screw from back if required.



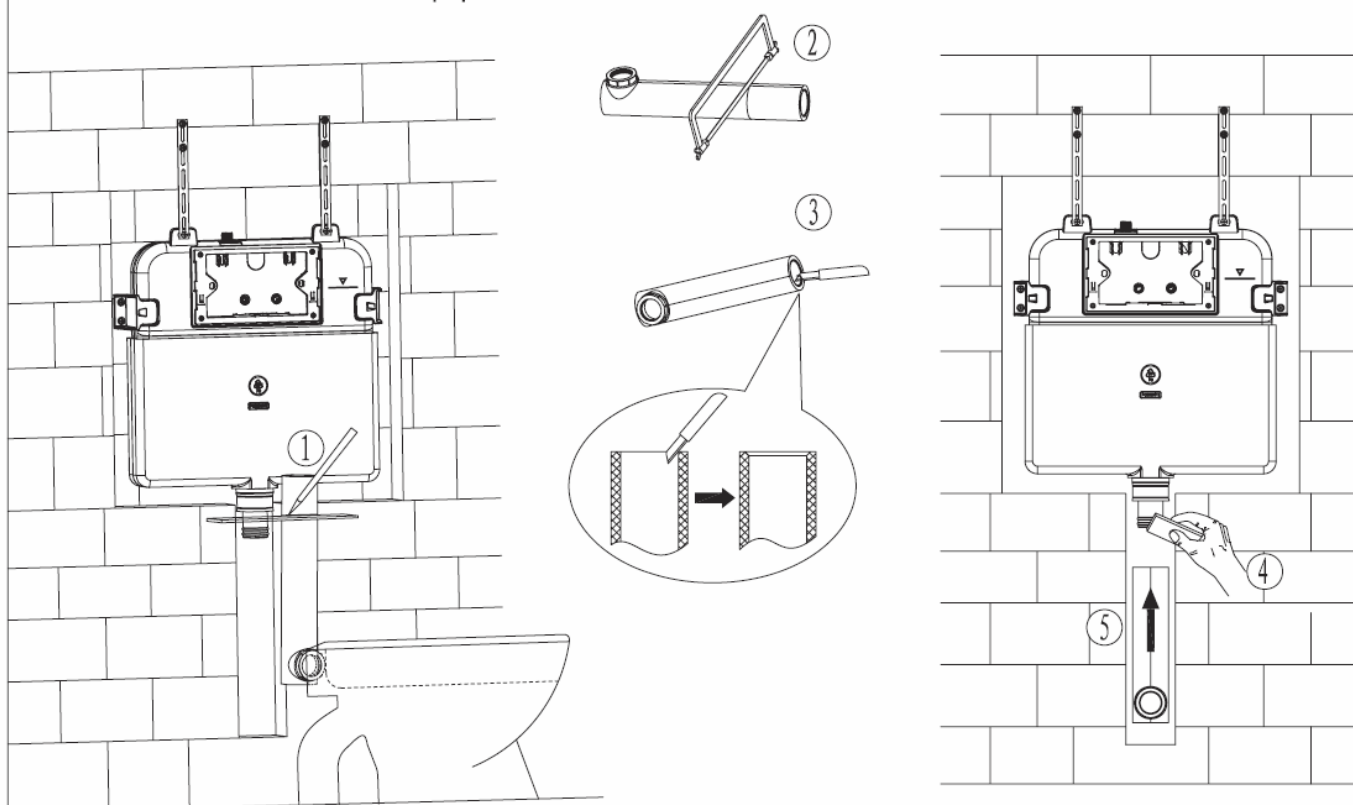
3. Fix the straps to the cistern:



4. Fix the cistern to the wall:



5. Installation of the flush pipe:



6. Install the dust box:

