



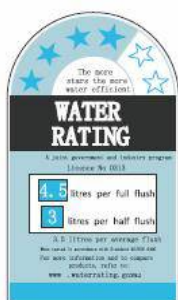
**TURNER  
HASTINGS**  
EUROPEAN BATHWARE  
*Creating elegance*

**R&T**®

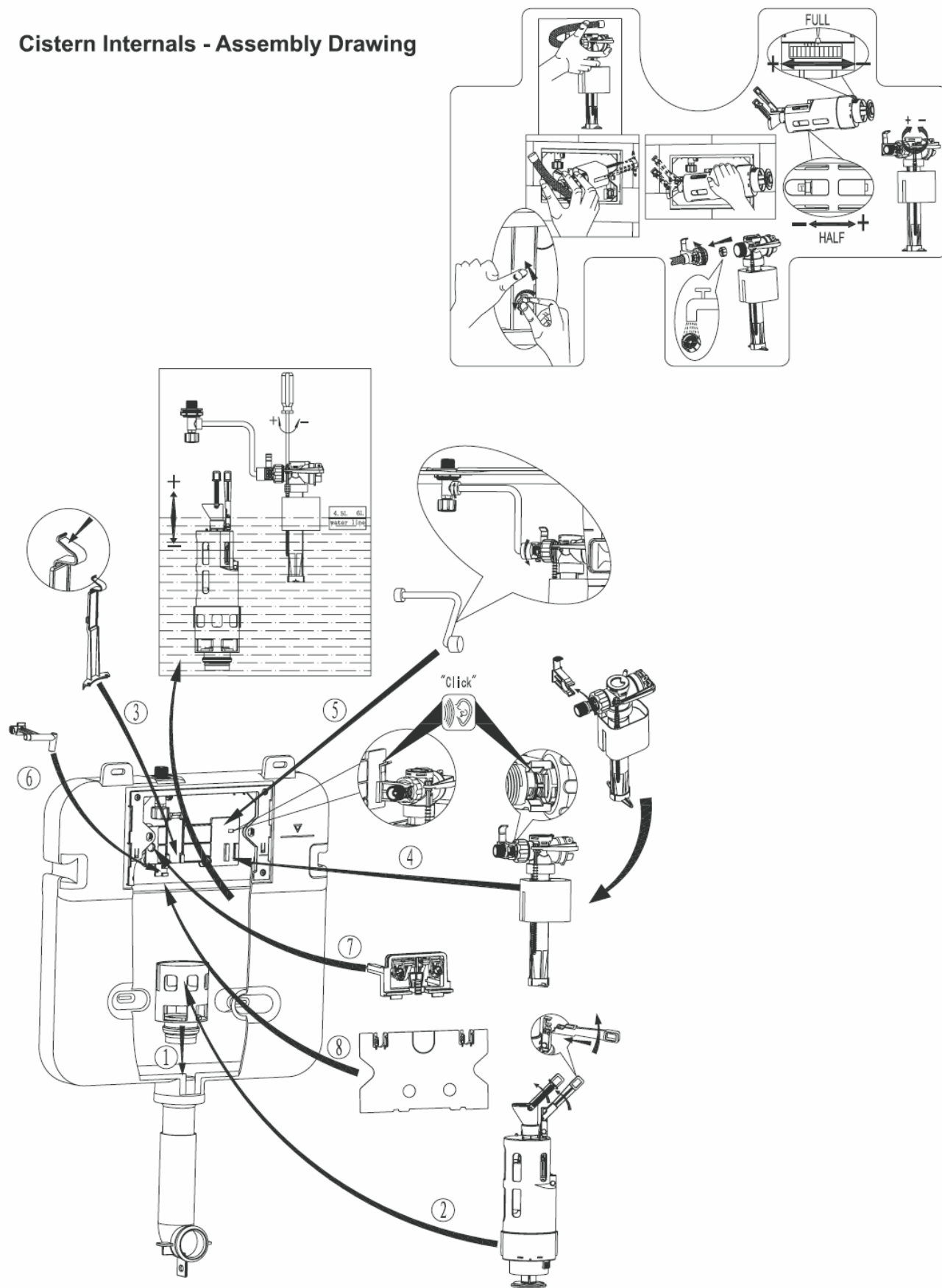
# INSTALLATION INSTRUCTIONS

## RUSHMORE IN-WALL CISTERN TO SUIT WALL HUNG PANS

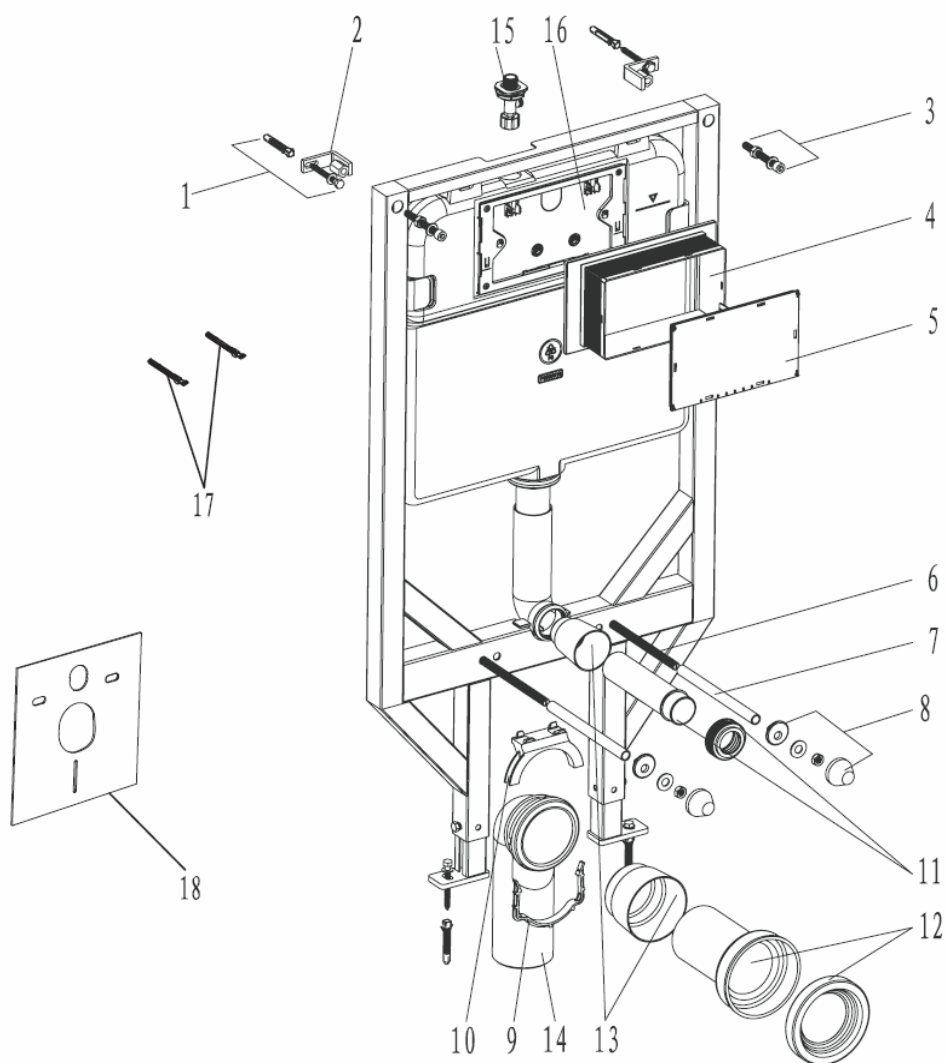
**CODE: AU301A**



## Cistern Internals - Assembly Drawing



Above internal parts are all already installed in the tank and this diagram is for reference only

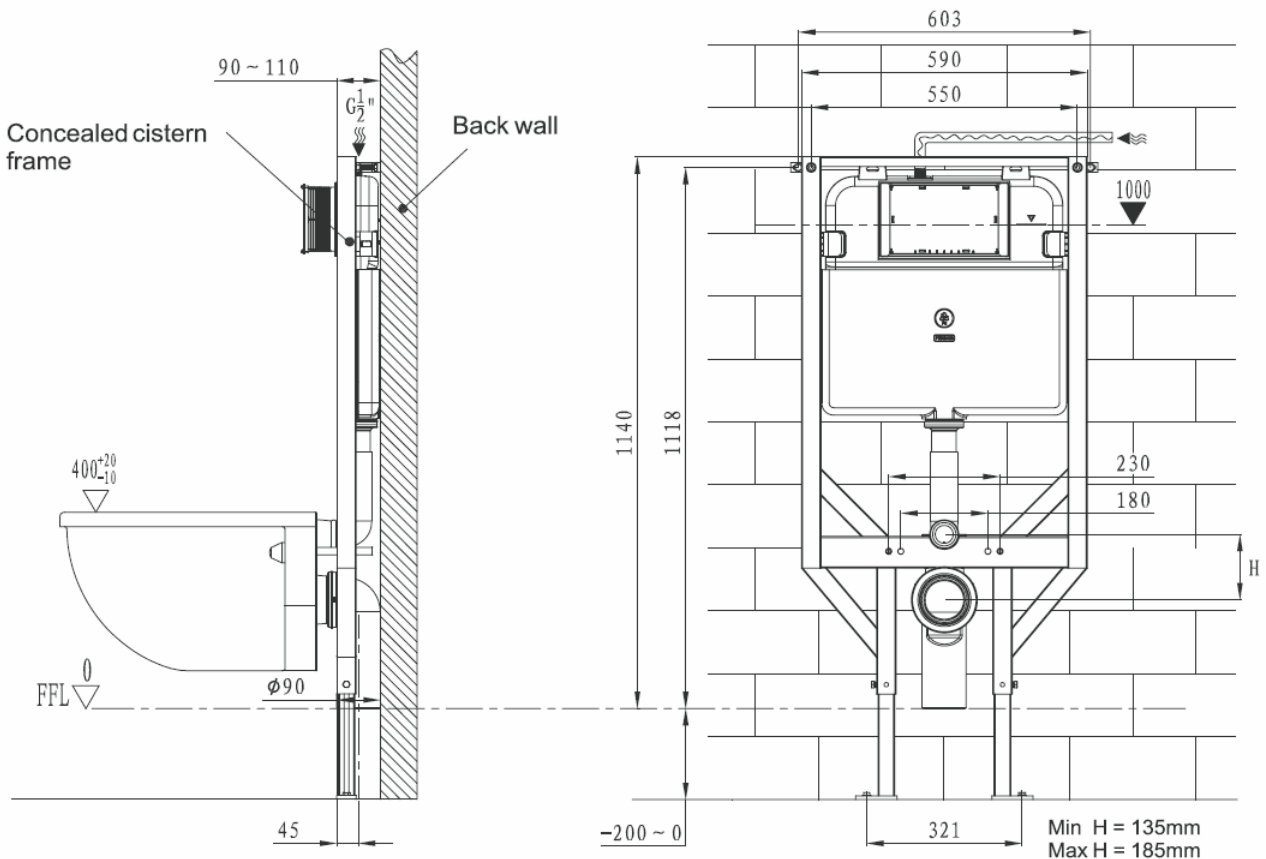


NO.	DESCRIPTION	QUANTITY
1	Expansion Screw	4
2	L-Bracket	2
3	Internal Hexagon Screw	2
4	Dust Box	1
5	Dust Box Cover	1
6	Pan Supporting Threaded Rods	2
7	Protective Cover	2
8	VC Fixing Accessories	2
9	Bracket Brace	2
10	Mounting Bracket	1
11	Flush Pipe + Kee-Seal	1
12	Sewer Pipe Connecting Accessories	1
13	Sewer Pipe Plug + Flush Pipe Plug	1
14	90 Degree Sewer Bend	1
15	Water Inlet Connection Point (Mini cistern tap)	1
16	Face Plate	1
17	Locking pins	2
18	VC Mounting Pad	1

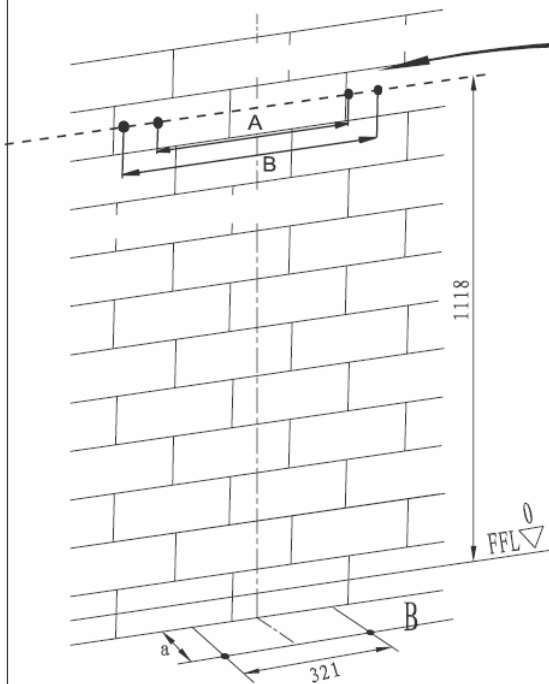
**IMPORTANT: READ THESE INSTRUCTIONS BEFORE INSTALLATION.**

- 1- Check contents of the carton are as listed in this manual.
- 2- Follow the instructions illustrated in the diagrams for methods of cistern installation.
- 3- Before connecting the water supply to cistern be sure to flush the pipeline clear of debris. This will prevent damage to the inlet valve and the operation of the cistern.
- 4- The step by step diagrams show the installation to a masonry wall but the cistern can also be installed in timber or steel frame walls.
- 5- To install the dual flush buttons refer to the instructions provided inside the button packaging.
- 6- Ensure that the internal mini cistern tap with black handle is in the fully open position. Water pressure to the cistern must comply with local Water Authority guidelines. If not known it is recommended that a pressure regulating valve is installed near to the water meter to comply the manufacturers warranty conditions.
- 7- For optimal flushing of the cistern the button flush rods must be installed to the correct position. See the button installation diagram.
- 8- To adjust the H (distance between the centre of the inlet and sewer centre) remove split pin from the base of flush pipe at rear and slide the flush pipe up to the desired position (Max 185mm).  
Note: flush pipe may need to be supported on the back wall.

The cistern has a top entry water connection and requires a **15mm BSP union connector** (not supplied)

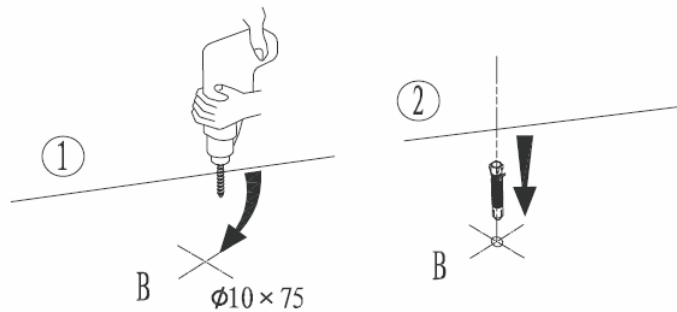


- 1- Drill holes in the wall and floor then install expansion plugs and screw frame into position.

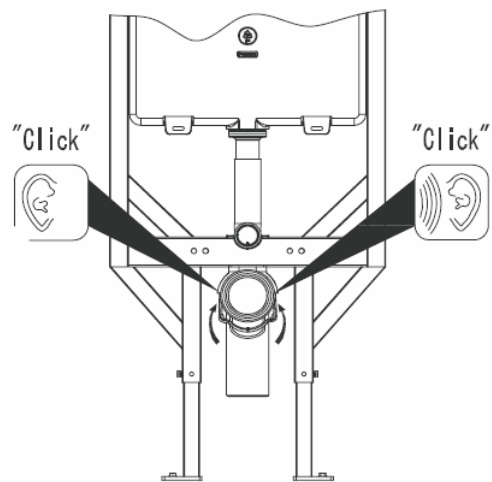
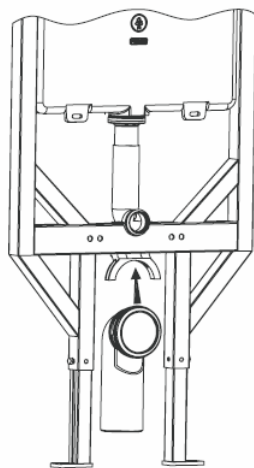
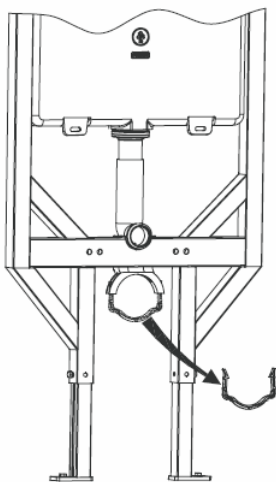


Measurement(A) = 497mm if the L brackets are to be installed facing inwards.

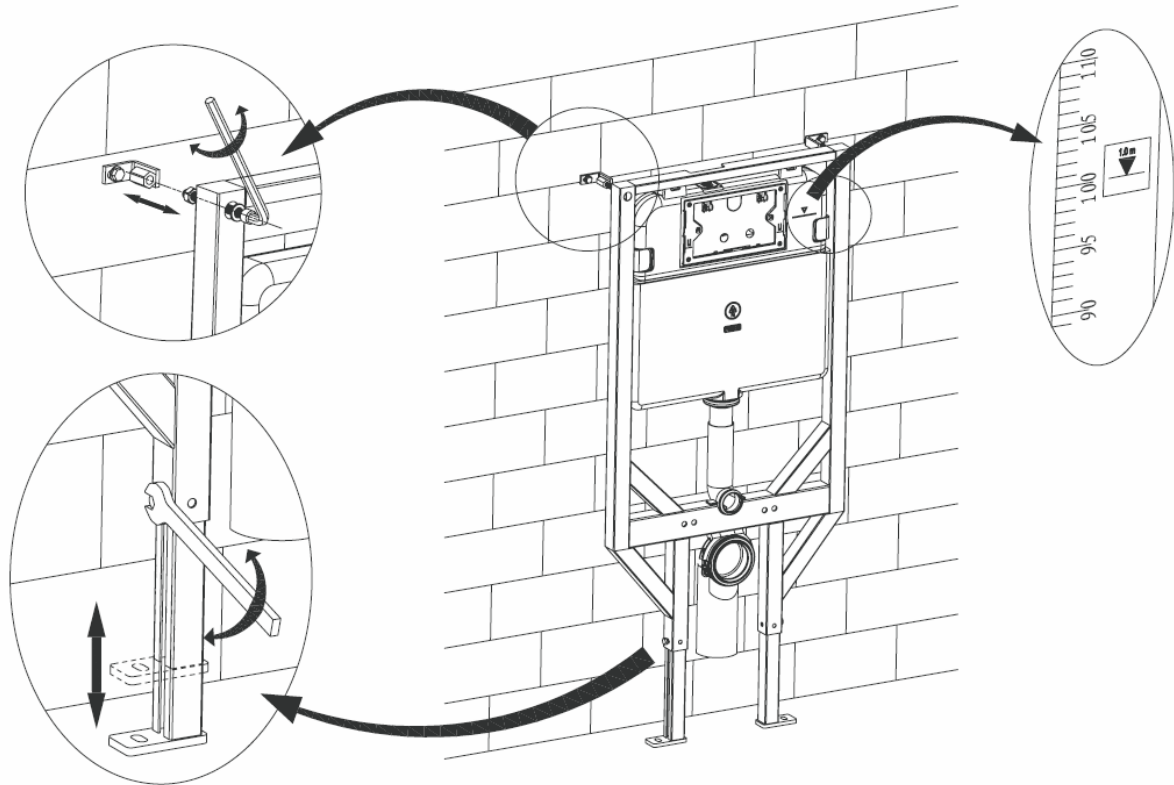
Measurement(B) = 603mm if the L brackets are to be installed facing outwards.



- 2- Install mounting bracket and 90 degree sewer bend.

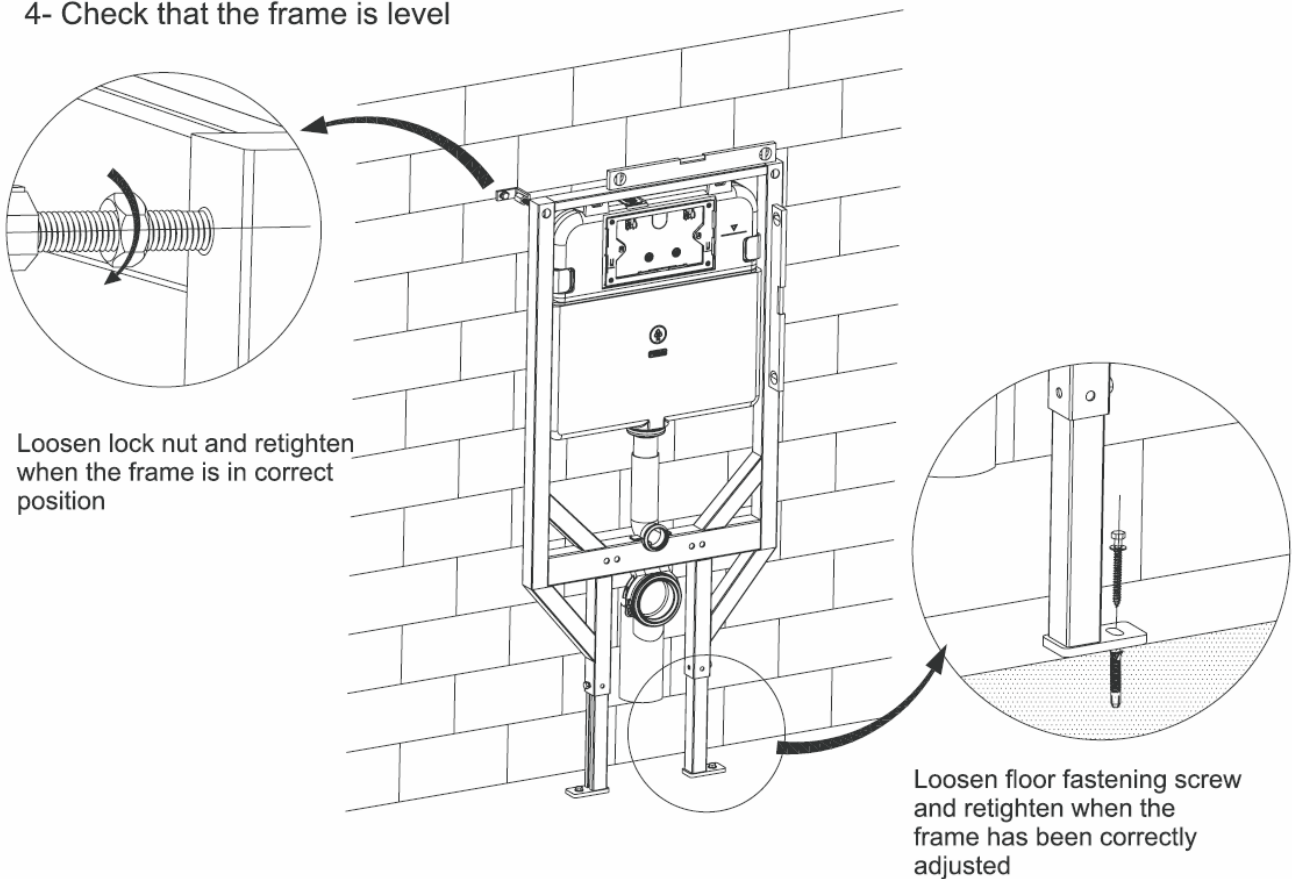


### 3- Install the frame



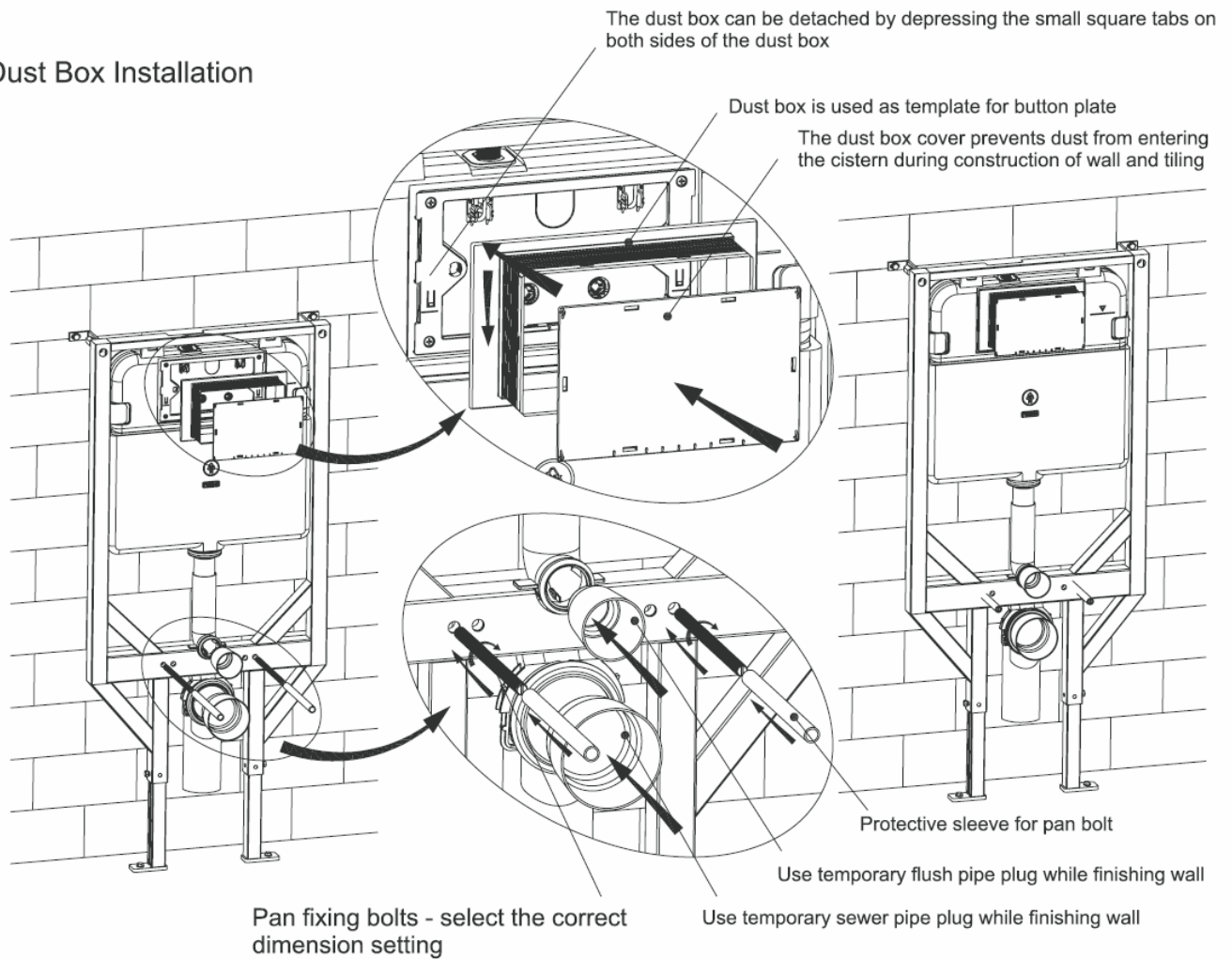
Adjust frame legs to correct height

### 4- Check that the frame is level

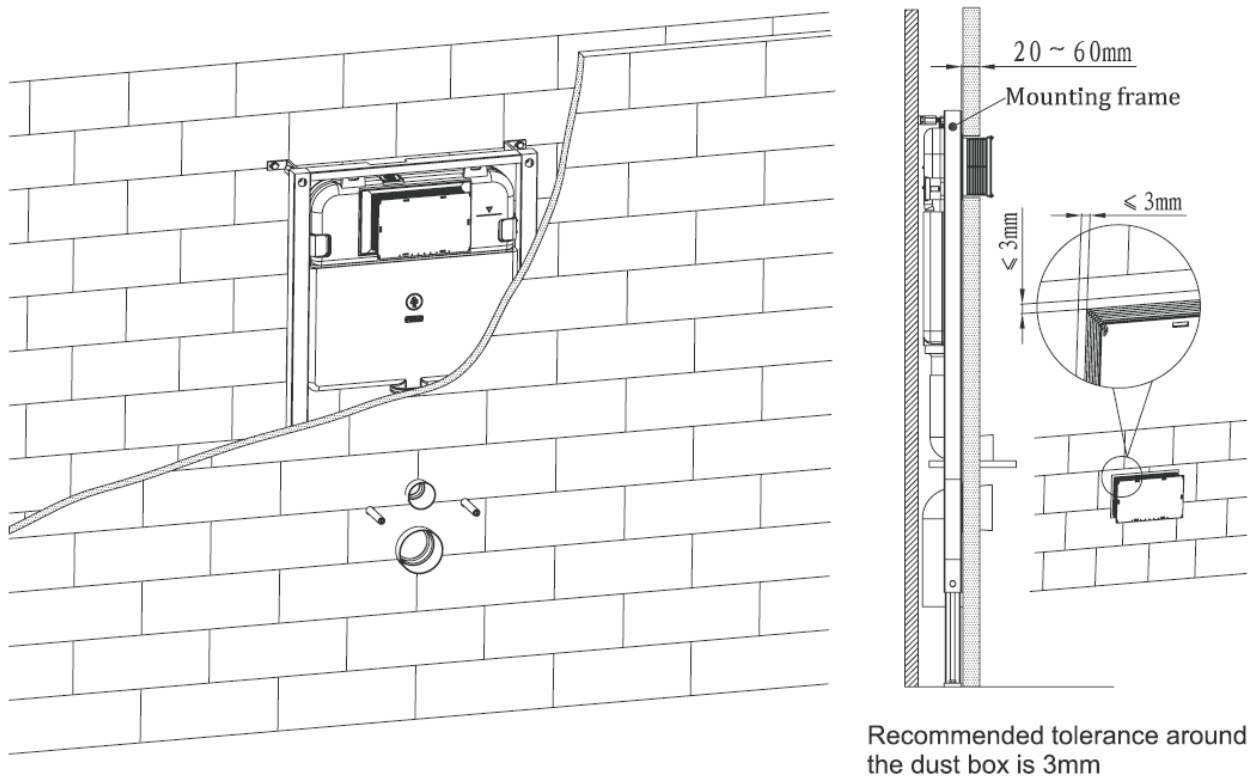




## 5- Dust Box Installation

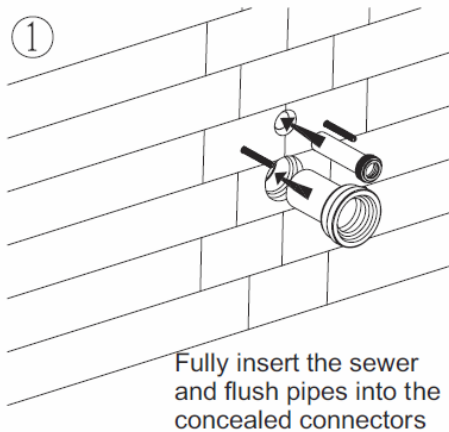


## 6- Wall thickness can be from 20-60mm (from front of cistern to finished wall surface)

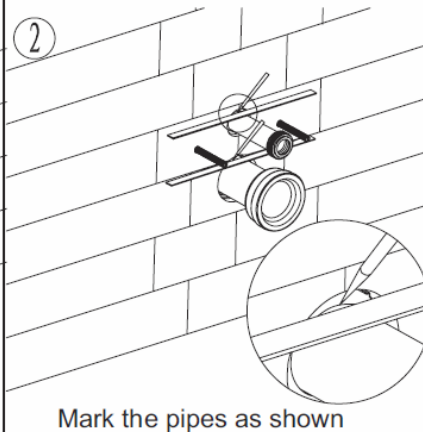


## 7- WC Pan installation

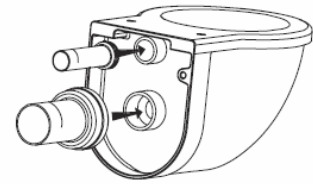
①



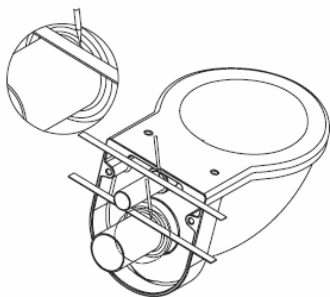
②



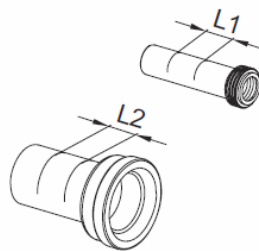
③



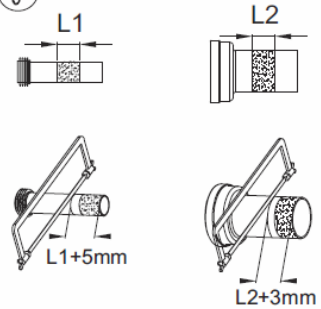
④



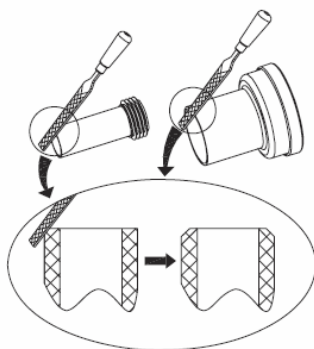
⑤



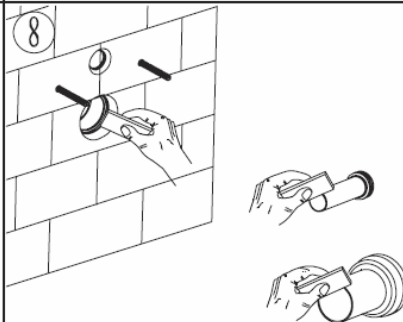
⑥



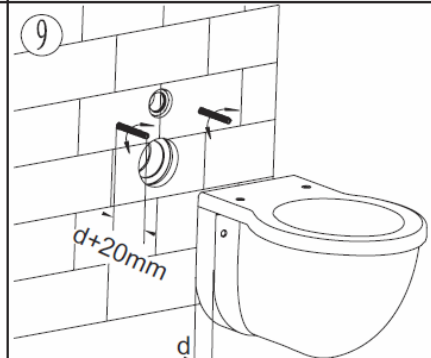
⑦



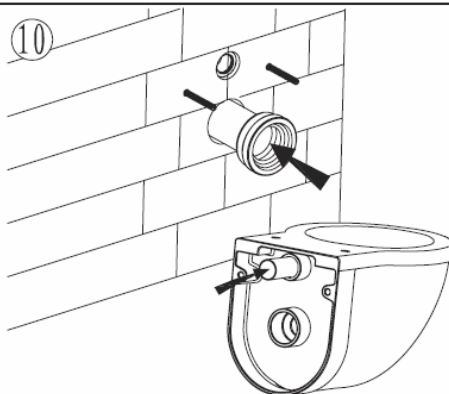
⑧



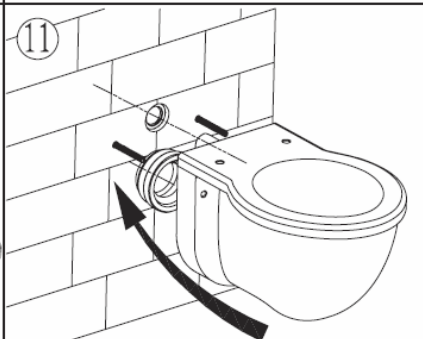
⑨



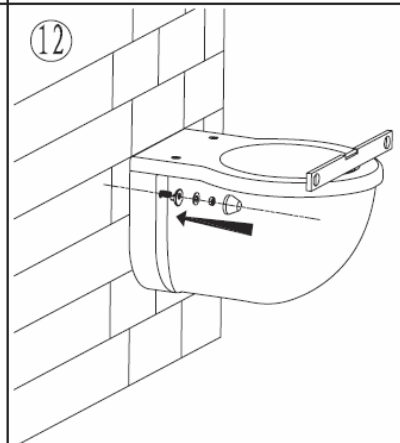
⑩



⑪



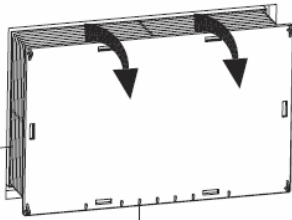
⑫



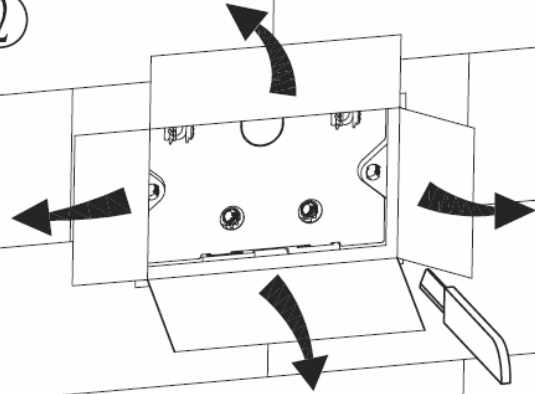


## 8- Installation manual of Actuator

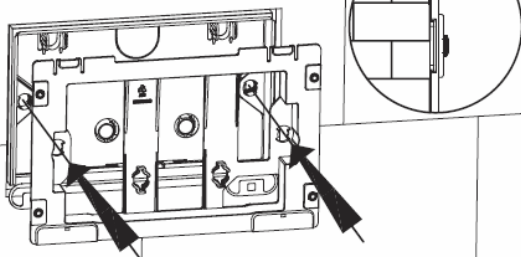
①



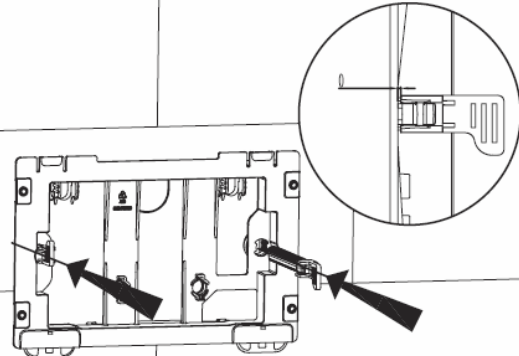
②



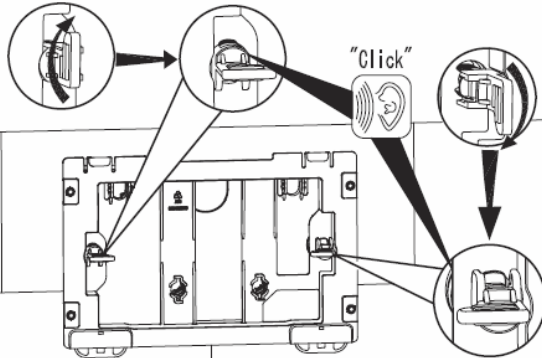
③



④



⑤



⑥

